

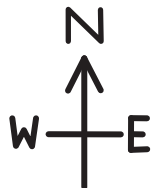


# Westerfolds Park

## MapRun Info

Press Select Event  
Go to Victoria > RunFree > SAR  
and select Westerfolds Park - Junior,  
Run, Walk or Bike  
Then, press Go to Start

- Ctl. Description  
 Start. West side of shelter  
 Finish. West side of shelter
1. Pylon - SE Corner
  3. Large Tree - behind seat (E)
  4. Path bend
  5. Cable Support - SW
  6. Pylon - middle of
  7. Fence corner
  8. Log - North side
  9. Log - West side
  10. Log - South side
  11. Erosion Gully - North side
  12. Seat
  13. Top of erosion gully
  14. Clearing - East side
  15. Seat
  16. Junction of roads (W)
  17. Small sign
  18. End of track - Clearing - (now overgrown)
  19. Creek/Track junction - SE
  20. Clearing - sth side
  21. Pond (North side)
  22. Shelter - West side
  23. Spur
  24. Noticeboard (SW)
  25. Copse (group of trees) - East side
  26. Bridge (NE side)
  27. Seat
  28. North end of Southern Knoll
  29. Fence Corner
  30. Fence Corner
  31. Lone Tree
  32. Park Sign
  33. Path through dense green - Southern end
  34. Track Junction
  35. Park Sign
  36. Logs (North end)
  37. Fallen log - sth side
  38. Distinctive Tree - watch your head



90 MINUTE  
SCORE COURSE

CONTROL VALUE  
20 points per control

You have 90 minutes  
from when you hear  
the START beep

Late Penalty  
10 points per minute

NOTE: All controls  
have the same value

**BE SAFE**

**You must comply  
with Victorian DHHS  
requirements**

**Stay out of long grass  
If in a group - stay together  
Cross creek at bridges only**



<http://vra.rogaine.asn.au/>

Organised by  
Victorian Rogaining Association  
for Eastern Suburbs Scouts

Next Rogaine - the popular CBDGaine  
26th Feb 2021

See website for details

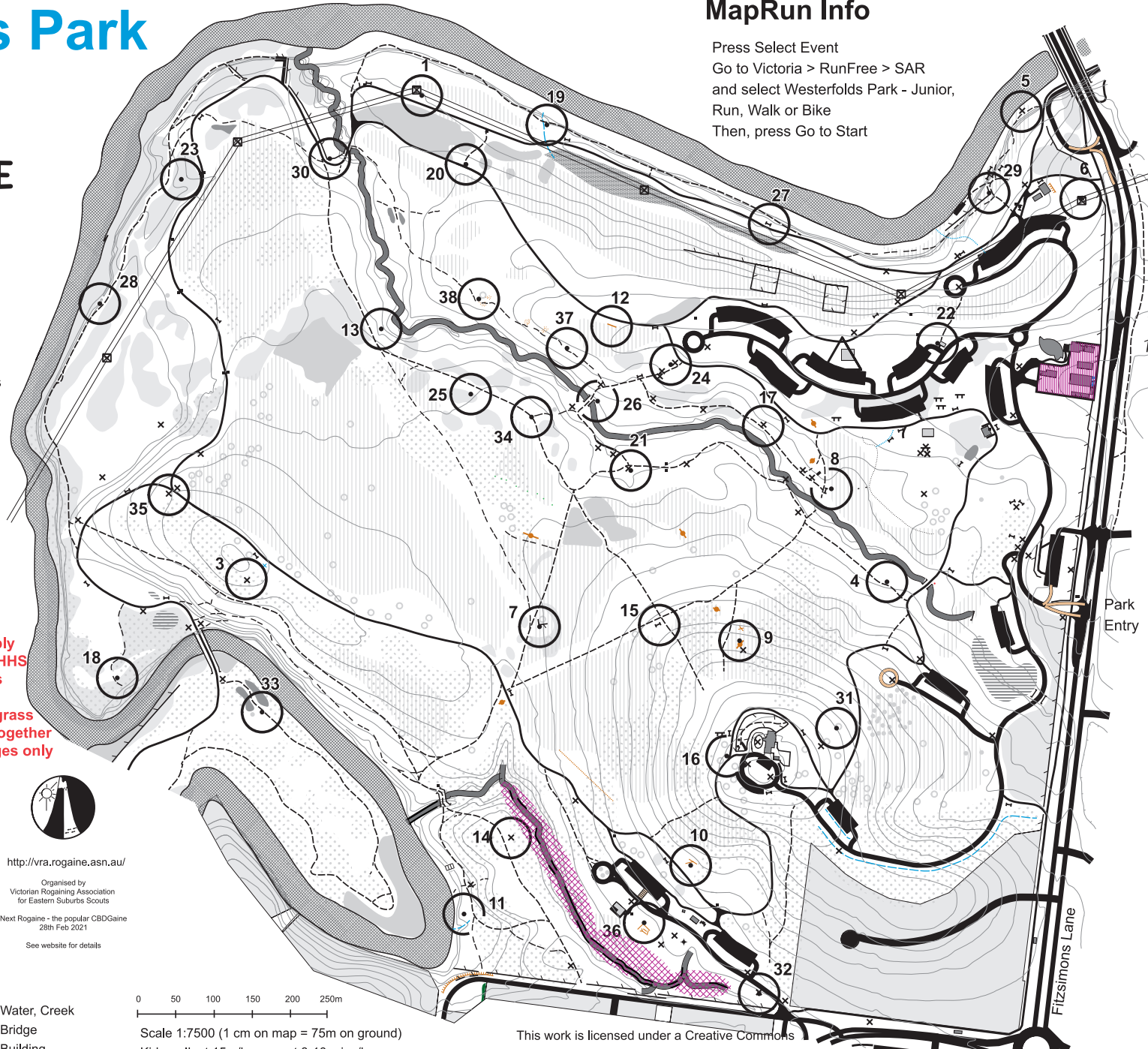
## LEGEND

- |                      |                    |              |
|----------------------|--------------------|--------------|
| <b>P</b> Playpark    | Paved areas, Roads | Water, Creek |
| Mowed/Playing Fields | Lanes              | Bridge       |
| White areas          | Tracks             | Building     |
| Scattered Trees      | Fences             |              |
| Vegetation           |                    |              |

0 50 100 150 200 250m

Scale 1:7500 (1 cm on map = 75m on ground)  
Kids walk at 15m/km, run at 8-10 mins/km  
2m contours

This work is licensed under a Creative Commons  
Attribution 4.0 International License  
for more info see: <http://street.orienteering.com.au/CreativeCommons.html>



Park Entry

Fitzsimons Lane